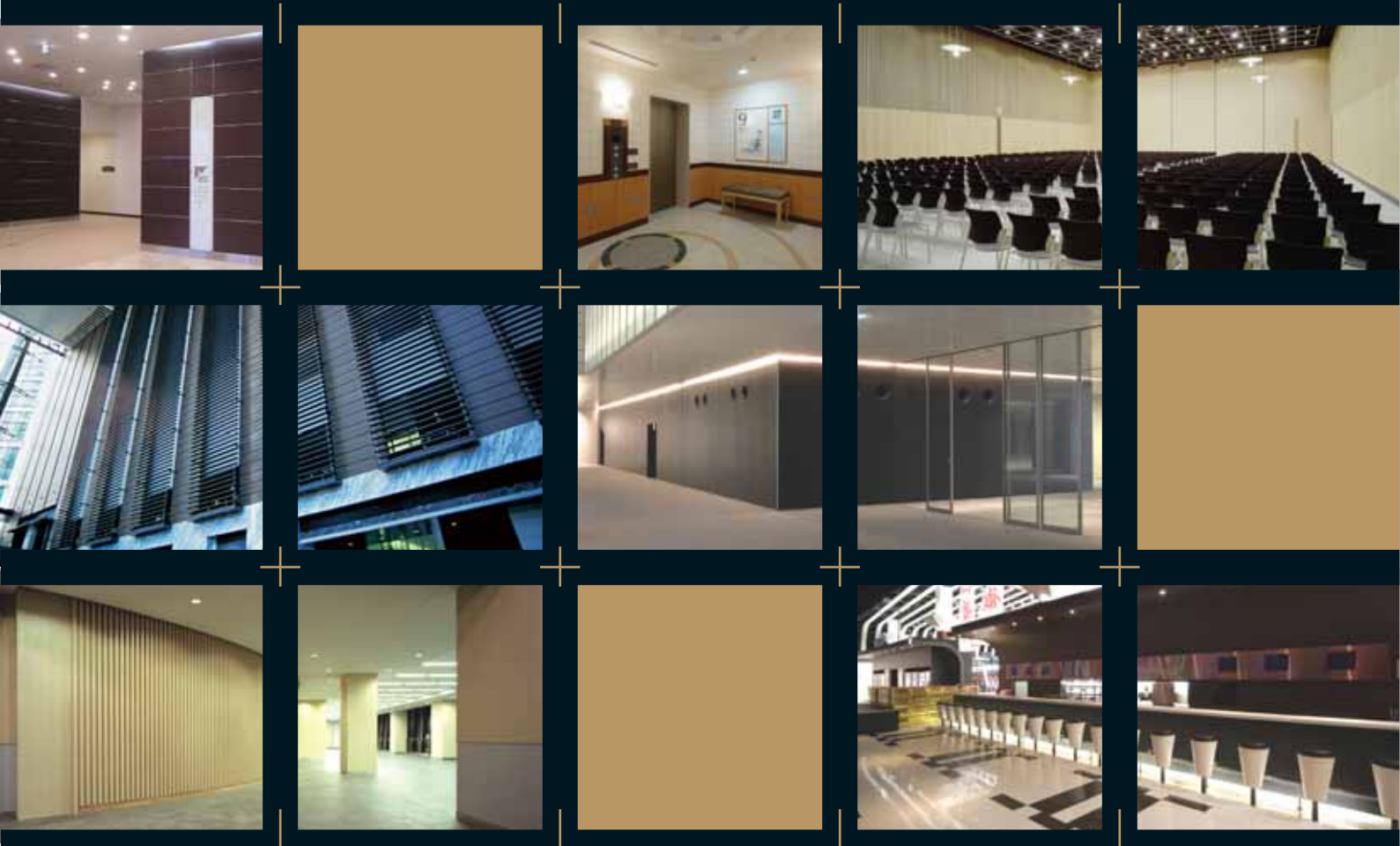




DI-NOC™ Film

Planning Guide



Transcend Creativity, Challenge Common Sense

DI-NOC™ Film creates a new world of functional building materials

DI-NOC™ Film has a history going back over 70 years. We offer a variety of colors, designs and feels: with these three unique aspects of the products, we offer wider creativity and freedom in the field of interior design and exterior decoration. As a leader in the industry, we are stimulating the sensibility of large numbers of designers and architects.



CONTENTS

Characteristics of DI-NOC Film pp. 4&5

Examples of use

- 1. Office buildings pp. 6-9
- 2. Hotels pp. 10-13
- 3. Housing developments pp. 14&15
- 4. Restaurants pp. 16&17
- 5. Game arcades (Pachinko shops) pp. 18&19
- 6. Department stores p. 20
- 7. Halls p. 21

- 8. Educational institutions pp. 22&23
- 9. Hospitals pp. 24-27
- 10. Retirement homes pp. 28&29
- 11. Exterior walls pp. 30&31

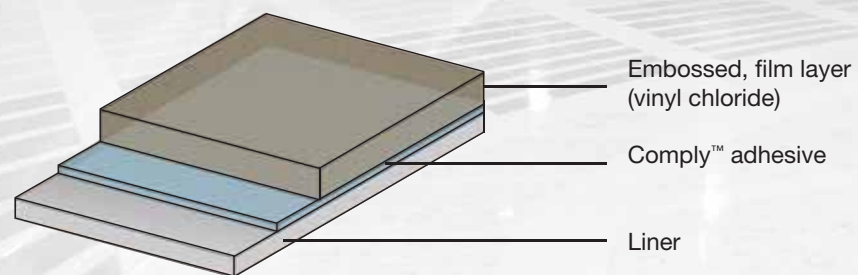
- D Board technology p. 32
- Product line p. 33
- Introduction to related products pp. 34&35
- Statistics and data pp. 36-39

DI-NOC™ FILM SERIES

500 patterns and colors in various materials. Regardless of where and how it is used, it delivers a quick and neat finish.

DI-NOC™ Film

DI-NOC™ Film is a self-adhesive film



The picture above shows a typical DI-NOC™ Film composition. Composition and materials vary for different product lines.

COLORFUL



We offer a variety of colors and patterns

More than 500 different colors and patterns are available to stimulate your creativity, with a wide range of potential applications in the field of interior and exterior design. You can achieve any desired finish by choosing from our wide array of products, which varies from basic and plain patterns to those with the real feel of wood; from complicated, creative patterns to those with metallic and gold leaf finishes. With DI-NOC™ Film, you are guaranteed reliable quality and a neat finish.

TOUGH



Resistance and versatility create long-lasting beauty

Our products are highly durable and water-resistant. We also offer a number of materials with strengthened weatherproofing suitable for outside use. **DI-NOC™** Flooring is a special product line for flooring applications with strengthened resistance against scratches and wear; **Fasara** can be applied to window glass to add a creative design touch while preventing glass from being scattered when broken; **Protect Film** can be used to protect walls from scratches and wear; other special product lines are also available. The materials used in our products are highly resistant to wear and are long-lasting. They are easy to maintain and are highly cost-effective.

EASY



Easy application and attractive finish

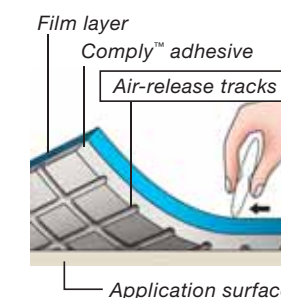
Finished jobs using our products are always neat. Application to large and uneven surfaces is easy too. Our material can be stretched by applying heat, so it can be easily used in spaces and on objects with 3 dimensional curves. We have a wide range of materials available for quick refurbishing of entrance halls and flooring sheets that can be applied over pre-existing flooring.

Comply™ adhesive

Fast & High quality application

Adhesive system prevents bubbling

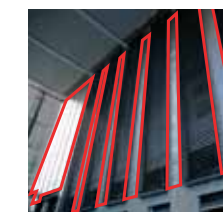
DI-NOC™ Film uses an adhesive system with grid-like channels on the adhesive surface, allowing air to escape during application. Air bubbles trapped between the material and the film can escape along these tracks, making applications to a large and complicated surface easier and ensuring a more perfect finish.



example

1

Office buildings



Product shown

Zebrawood pattern

Product number **FW-656**



Product shown

Ebony grain

Product number **WG-664**



Modern space created by the contrast between metal and wood

A beautiful wood-grain pattern emphasizes straight lines and sharpened designs.

The dignified feel of zebrawood and ebony patterns creates an elegant touch.



example

2

Office buildings

Tranquility expressed with the natural feel of wood

Adds warmth and comfort to spaces that tend to be inorganic and rigid, and radiates a sense of elegance to people who walk through the space.



Product shown

Oak (Nara) grain

Product number FW-627



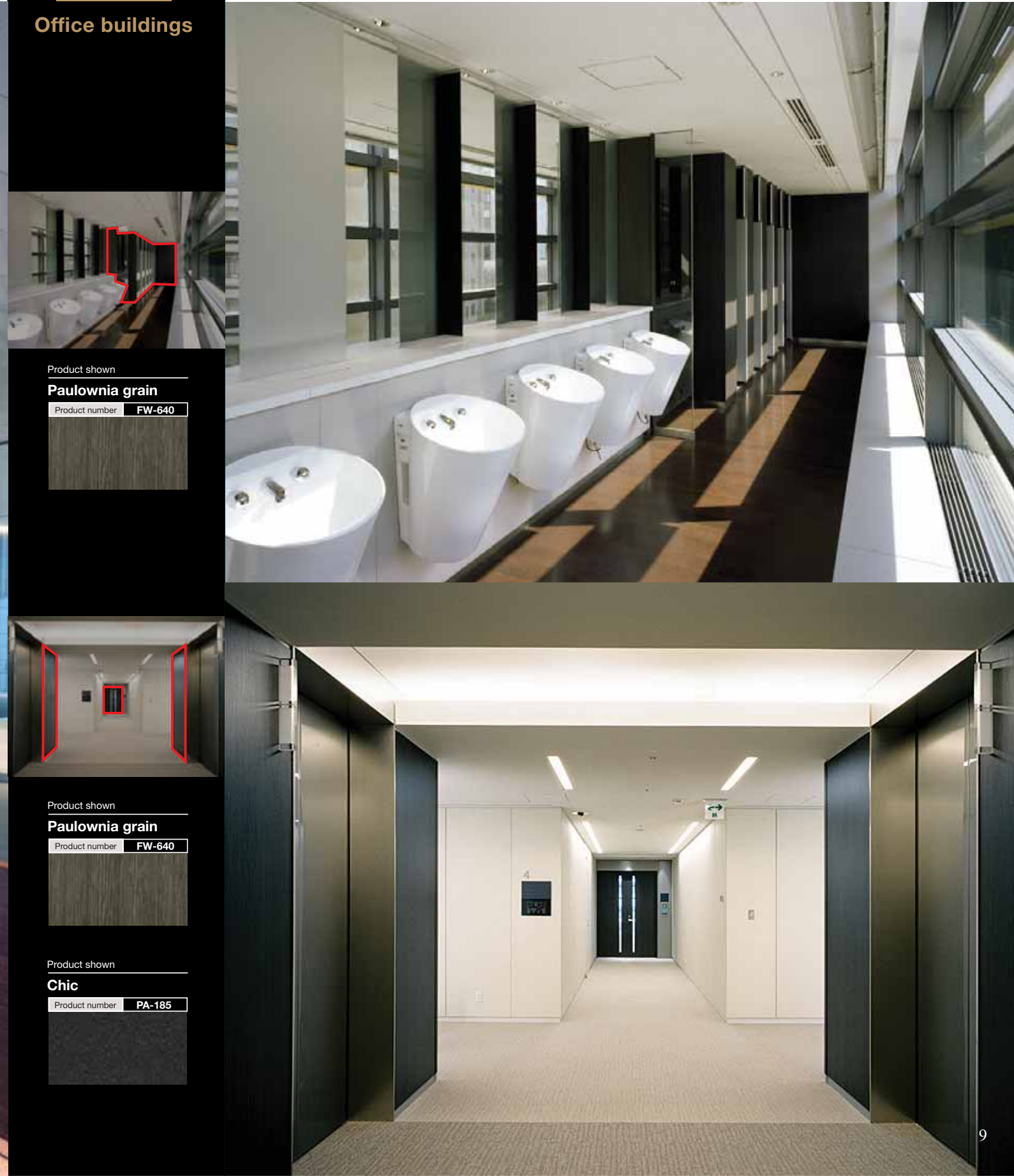
example

3

Office buildings

Rich variations create a businesslike atmosphere in a colorful way

Adds rhythm to monotonous daily routines and gives warm accents to create a tense environment.



Product shown

Paulownia grain

Product number FW-640



Product shown

Paulownia grain

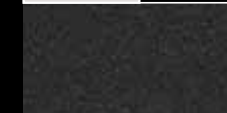
Product number FW-640



Product shown

Chic

Product number PA-185



example

4

Hotels

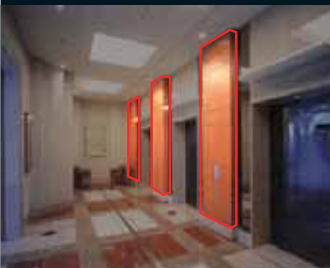
HOTEL EMION TOKYO BAY



Product shown

Anigre grain

Product number **WG-628**



Product shown

Anigre grain

Product number **WG-628**



Provides timeless comfort to a luminous space

The warmth of wood grain fits perfectly with marble to add a touch of comfort to the hotel foyer.



Product shown

Anigre grain

Product number **WG-628**



example

5

Hotels

Elegance accentuated by walnut patterns gives guests a warm welcome

Create the perfect tone for the reception area for your important guests with a feel of wood that is soft on the eyes. A chic walnut pattern provides warmth and sophistication.



Product shown

Walnut grain

Product number **FW-651**



Product shown

Walnut grain

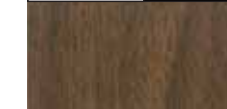
Product number **FW-651**



Product shown

Walnut grain

Product number **FW-651**



example

6

Housing developments



Product shown

Cherry (sakura) grain

Product number **FW-655**



Product shown

Metallic

Product number **ME-536**



Product shown

Cherry (sakura) grain

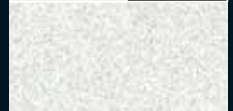
Product number **FW-655**



Product shown

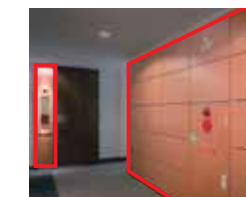
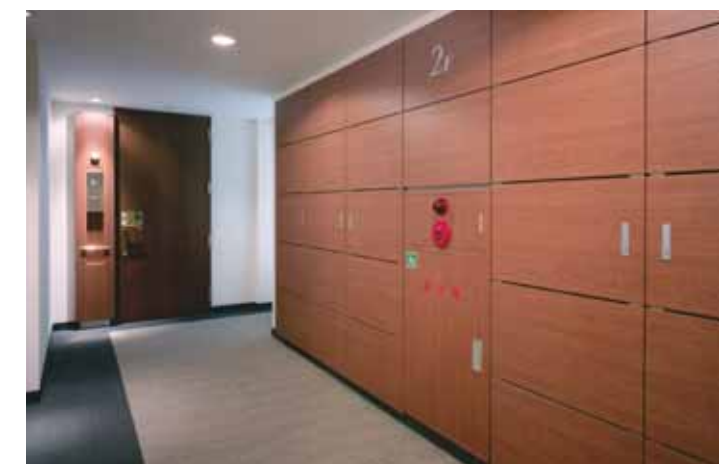
Metallic

Product number **ME-536**



Adding calm to a vast space in white

Brilliant powdery white combines with soft cherry patterned accents. Provides cheer and tranquility to the communal areas in housing developments.



Product shown

Cherry (sakura) grain

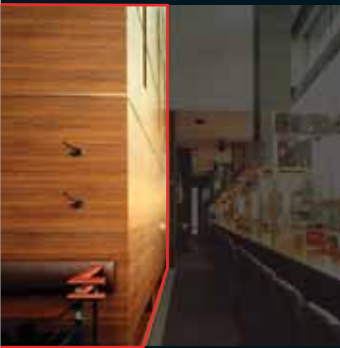
Product number **FW-655**



example

7

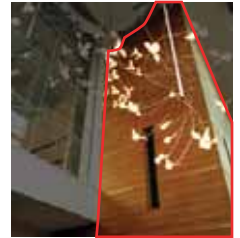
Restaurants



Product shown

Teak grain

Product number WG-157



Product shown

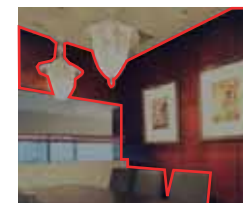
Teak grain

Product number WG-157



Comfort and relaxation through the use of natural colors

The modest teak grain coloring makes a perfect environment for casual dining. A simple grain pattern brings out the modern beauty of interior design.



Product shown

Uenju grain

Product number FW-238



example

8

Game arcades (Pachinko shops)



Product shown

Pear (Nashi) grain

Product number **WG-410**



Product shown

Pear (Nashi) grain

Product number **WG-410**



Unity of futuristic space with the warmth of wood

Adding warmth with a touch of wood into a space composed of contrasts.

Players will feel relaxed by the calming effect of wood in a space that emphasizes openness.



Product shown

Hyper metallic

Product number **HM-37F**



example

9

Department stores

Shaded metallic material shines under artificial light

To best fit the grid patterns, mirrored silver was selected for the basic composition of the building. The result is an urban space that functions beautifully as a background for sales items.



Product shown

Tape-mirror

Product number VM-167



Marui City Ueno
(Planning and construction:
Aim Creates, Inc.)

example

10

Halls

Wood grain pattern looks highly attractive in a simple, plain space

High ceilings and the use of silver-colored hearts give a feeling of openness to the room. The bright, natural look provides a sophisticated and relaxed atmosphere.



Product shown

Silver heart

Product number WG-250



Product shown

Wenju grain

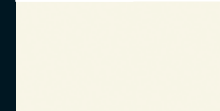
Product number FW-618



Product shown

Single color

Product number PS-976



example

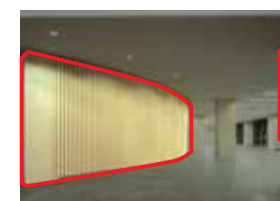
11

Educational institutions



Elegance provided by maple pattern surrounds study area with calm

The flavor of natural wood adds to the openness inherent in the architecture of the building.
The sophisticated maple pattern goes perfectly with the feeling of freedom created by the design.



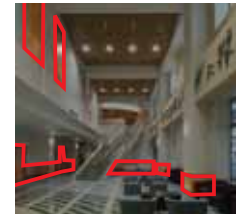
example

12

Hospitals

Cleanness and brightness expressed through natural wood material

A maple pattern with soft and nuanced colors has a soothing effect on visitors. The sense of cleanliness crucial for a hospital is provided by the use of white walls.



Product shown

Maple grain

Product number **WG-836**



Product shown

Maple grain

Product number **WG-836**



Product shown

Maple grain

Product number **WG-836**



example

13

Hospitals



Product shown
Cherry (Sakura) grain
 Product number **WG-370**



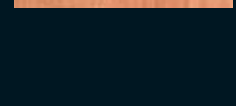
Product shown
Pear (Nashi) grain
 Product number **WG-411**



Product shown
Chic
 Product number **PA-041**



Product shown
Cherry (Sakura) grain
 Product number **WG-370**



Softness of wood grain patterns brings relaxation

The soft feel of the cherry grain pattern creates a comfortable area where different generations can gather. The brightness of wood provides a sense of security in open spaces.



Product shown
Cherry (Sakura) grain
 Product number **WG-370**



example

14

Retirement homes



Product shown

Mahogany grain

Product number **FW-887**



Product shown

Hard maple grain

Product number **WG-243**



A touch of natural warmth creates a barrier-free environment

The warmth of hard maple creates an area of comfort and relaxation. Consideration for the people waiting, and a sense of hygiene, are expressed in a space full of openness.



Product shown

Hard maple grain

Product number **WG-243**



example

15

Exterior walls



Presence of wood shines through in an urban setting

A building technology that makes the most of both natural wood and existing building materials, and accentuates identity. The strong presence of wood attracts attention from busy people in a bustling urban setting.



Product shown

Silver heart grain

Product number **WG-251**



Product shown

Oak (Nara) grain

Product number **FW-627**



Product shown

Silver heart grain

Product number **WG-251**

